



# Thermal Printers

Print Confident. Print Secure. Print Zebra.



# Print Confident. Print Secure. Print Zebra.

You don't have time for printer failure. Printers should perform flawlessly, almost invisibly. But when they're down, so are your operations. Remove the hassle with Zebra.

From simplified set-up to quality construction to performance-enhancing Print DNA software toolset – our printers are designed to be self-reliant, durable, and endlessly eager to work. Going beyond just hardware, they deliver the autonomy, intelligence – and unlike other brands, security – that give you peace of mind and a genuine sense of protection.

Print with confidence knowing you have a partner with 50 years of thermal printing innovation by your side.

---

Don't Compromise.  
Get it all with Zebra.

---



# Relentless Performance in Any Environment

Printing must happen, no exceptions. If warehouses can't print shipping labels, customers can't get products. If drivers can't print receipts, invoices can't be processed. And if you can't print ID access cards, then security could be a concern. Get it done with Zebra thermal printers. They're designed with one purpose—to help you perform your best. **In any environment. Any application. Any condition.**



## Transportation and Logistics

Deliver non-stop service from the first mile to the last

- Cross-docking and stocking
- Picking and packing
- Shipping and receiving
- Inventory management
- Proof of delivery
- Rental car return



## Manufacturing

Ratchet up productivity from the plant floor to the front door

- Work in process
- Compliance labeling
- Parts management
- Equipment maintenance
- Traceability
- Quality assurance



## Healthcare

Strengthen patient safety from admissions to discharge

- Positive patient identification
- Laboratory/pharmacy management
- Asset management
- Accurate specimen labeling
- ID and access control



## Retail and Hospitality

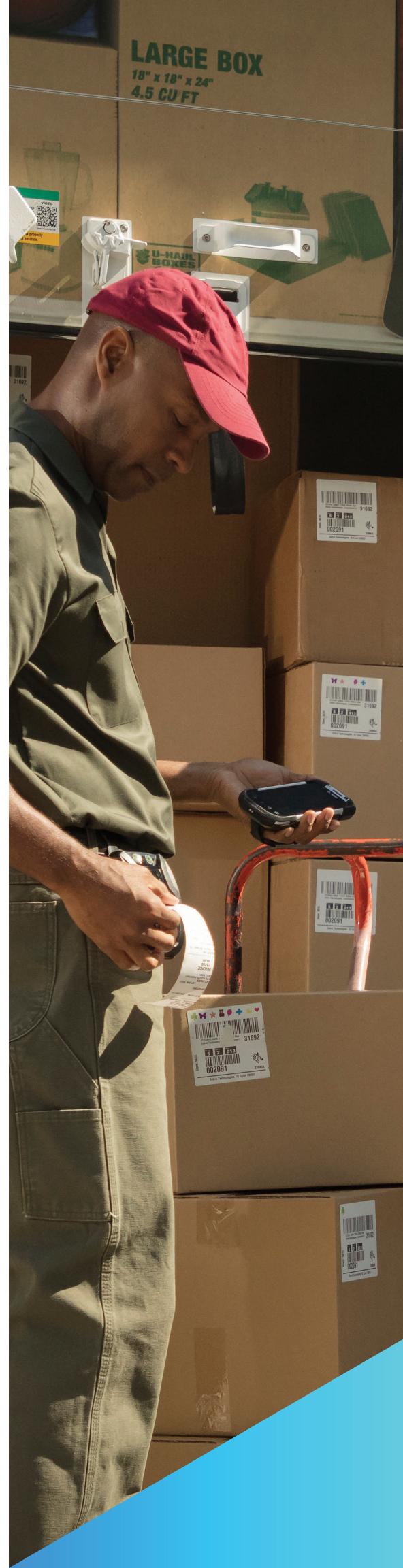
Give customers an experience that keeps them coming back

- Product pricing
- Cycle counts
- Mobile point of sale
- Proof of purchase
- Gift and loyalty cards
- Event and season passes
- ID badges
- Membership cards

## Government

Improve services and safety with fast, accurate printing that's secure

- E-citation
- Health and human services
- Emergency management
- Military supply chain
- Identity management
- Code inspections
- Exchange services





## Printers Are a Start

But a complete enterprise solution should go end-to-end

**When you're looking for enterprise solutions, look beyond printers.**

Consider intelligent mobile computers, multi-tasking tablets and accurate scanners that integrate easily, pair instantly and talk freely to one another. If you top the hardware with Zebra's support, visibility, professional and learning services, you can reduce device vulnerabilities and maximize uptime and productivity—making it easier for you to integrate new technologies into your customer's existing IT environments and workflows. Think how much better that would make management, usage and sharing of critical information.

**Reliability and peak performance are also a must.** You'll have that with Zebra's edge-to-edge portfolio. Each device is strong alone. Yet together, they'll make your workers unstoppable.



# Did That Come Out Right?

It did, if you used Zebra certified supplies

Not every supply is worthy of the Zebra name. Only the toughest, most consistent and highest performing supplies will be. Anything less is a compromise in uptime and expense.

## Zebra Supplies Offering



### Barcode Labels and Tags

From synthetic materials to basic paper solutions, challenging environments to compliance, hard-to-label surfaces to easy-to-remove labels, or tamper-evident to tear-proof, we have more than 90 certified material options to meet your unique needs. With over 400 items in stock and extensive custom capabilities we can provide a solution for virtually any application.



### Thermal Ribbons

Choose from wax, wax/resin and resin formulations to meet the durability demands of your application when ideally matched to our thermal transfer materials.



### Hospital Bracelet and Patient ID Wristbands

Zebra offers thermal, laser, RFID and alert wristbands that remain scannable throughout the average patient stay. We can meet the unique needs of your patient population and workflows - from general patient population to labor and delivery, to neo-natal to outpatient service.



### Event Wristbands

Our broad portfolio of print-on-demand thermal barcode and RFID wristbands enables the implementation of cashless POS, entry management, the reduction in ticket fraud, simplified transactions and the tracking of guests' last best-known location.



### Receipt Paper

Our portfolio of receipt paper options meet your brand image and application durability, image quality, and archival requirements, as well as your budget.



Exceptionally consistent.  
Consistently exceptional.



### Rigorously tested

Our 23-point inspection keeps work and printers from coming to a standstill.



### No substitutions allowed

Unlike other vendors, we never swap material to cut costs. That's because we know that inconsistency will cost you in productivity and repairs.



### Zebra printer compatibility

Compatible inks, varnishes and tools ensure printers and workflows don't break down.



### Stringent standards

Our supplies are designed to meet industry standards, so you can meet compliance goals.



### Non-abrasive

Sandpaper-like label surfaces cause printhead elements to fail prematurely, resulting in unreadable labels.



### Made tough

You work in hot, cold, damp and dusty environments. So do our supplies.



## Industrial Printers

Industrial strength for industrious workers

Zebra industrial printers are designed for harsh and demanding environments. With rugged durability and future-proof adaptability, our user-friendly barcode label and RFID printers are designed to provide 24/7 reliability. Don't compromise, choose Zebra for your high- to mid-volume applications.

Industrial Printers					
	ZT200 Series	ZT400 Series	ZT510	ZT600	ZE500
	Value	Midrange	Premium	Premium	Premium
<b>Manufacturing</b>	•	•	•	•	•
<b>T&amp;L</b>	•	•	•	•	•
<b>Retail</b>	•	•			
<b>Healthcare</b>	•	•			
<b>Warehouse</b>	•	•	•	•	•
<b>Government</b>	•	•	•	•	
<b>Print DNA</b>	•	•	•	•	



## ZT200 Series

Small in price, big in performance

Lower price with essential ease of use and performance features.

### Features

- Compact footprint
- Ideal for light industrial and commercial environments
- Available in direct thermal or thermal transfer models

### Portfolio Differentiators

- Moderate-duty cycle with a limited feature set
- Ideal for commercial and light industrial applications



## ZT400 Series

Sturdy, simple, smart

Rugged durability, designed to grow with your evolving business needs.

### Features

- 4.3-inch full-color touch display for quick settings changes
- Tool-less printhead and platen roller replacement
- RFID available on both 4" and 6" widths
- RFID On-Metal solution available for ZT411 (203 and 300 dpi only)

### Portfolio Differentiators

- Moderate to high duty cycle with a wide variety of features
- Ideal for industrial environments



## ZT510

Essential features for heavy-duty printing

An ideal balance between performance and value with essential features for heavy-duty printing.

### Features

- All metal construction supports continuous performance without throughput delays
- Icon-based, multilingual graphical LCD user interface is intuitive to operate

### Portfolio Differentiators

- Limited feature set
- High-duty cycle for mission critical operations in the toughest environments



## ZT600 Series

Intelligence and industrial brawn

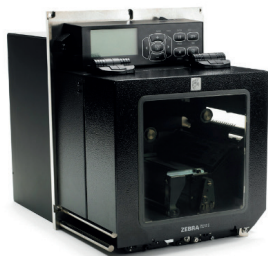
Industrial strength and full featured for every challenge.

### Features

- All metal construction supports continuous heavy-duty performance with high throughput
- Icon-based, multilingual graphical LCD user interface is intuitive to operate
- Optional full-color, 4.3-inch color touch display

### Portfolio Differentiators

- Wide variety of features
- High-duty cycle for mission critical operations in the toughest environments
- RFID available on both 4" and 6" widths



## ZE500

For next-gen solutions

OEM print engine for print and apply labeling applications.

### Features

- Rotatable display
- Extended-life modular drive system
- RFID available on 4-in width

### Portfolio Differentiators

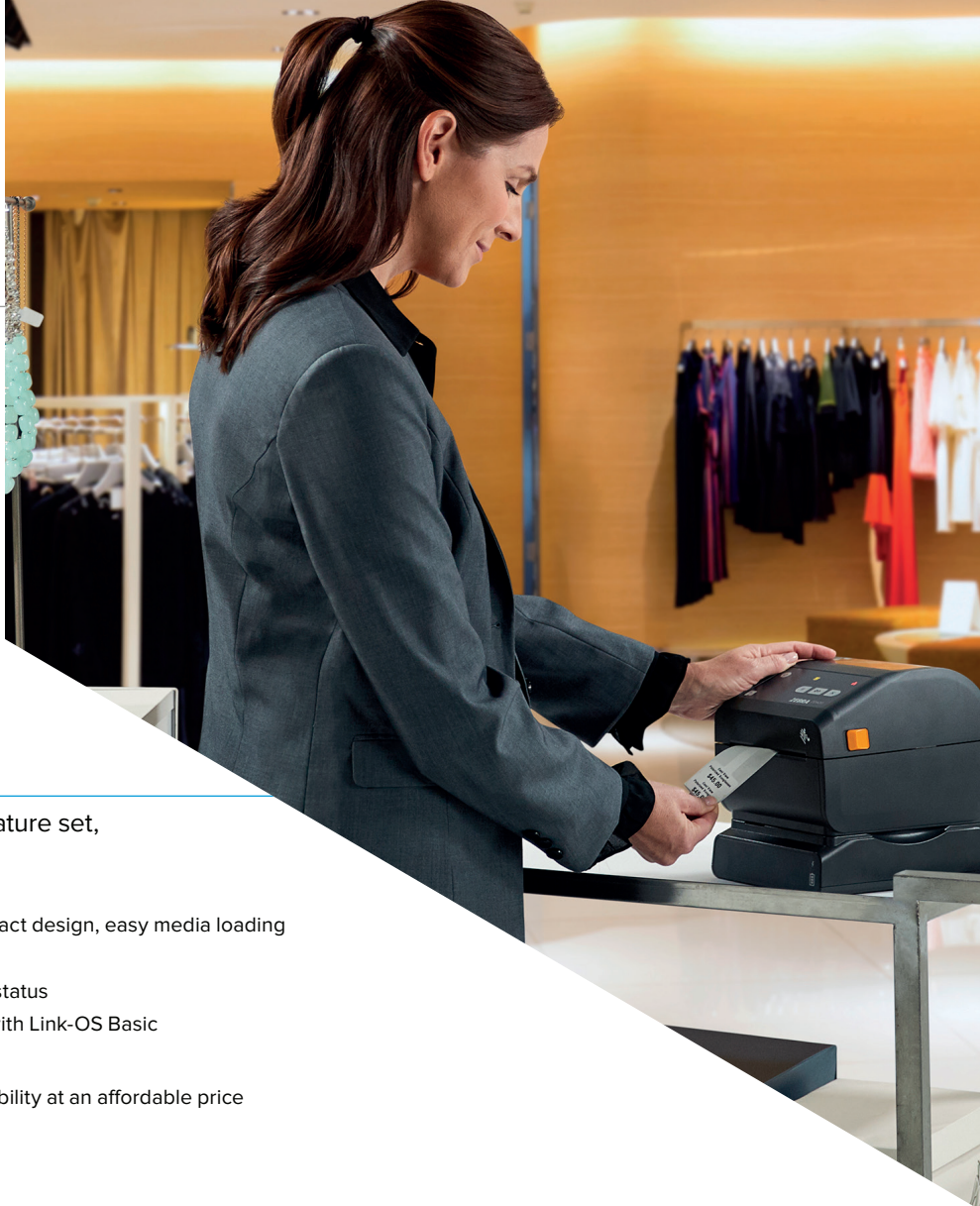
- High-duty cycle in the toughest environments
- Industrial all-metal construction
- Designed to be integrated into a print and apply solution



# Desktop Printers

Made to fit your needs, space and budget

Zebra desktop printers are compact, simple to operate and offer the durability your business demands for low- to mid-volume printing. Don't sacrifice performance for savings, Zebra has a desktop printer at every price point for all your barcode label, receipt, wristband and RFID applications.



## ZD200 Series

Unmistakable quality at an exceptional value

Simple operation, basic feature set, exceptional value.

### Features

- 4-inch print width, 4 ips, compact design, easy media loading
- Quality dual-wall construction
- USB connectivity, single LED status
- Core Print DNA applications with Link-OS Basic

### Portfolio Differentiators

- Value-class printer offers reliability at an affordable price



## ZD410

The “fits anywhere” printer

Advanced, “fits anywhere” 2-inch printer, easy to use with an intuitive interface.

### Features

- 2-inch ultra-compact printer for space constrained applications
- Variety of connectivity options
- Print DNA for greater visibility, manageability and security
- Healthcare model is easy to disinfect
- 203 and 300 dpi available

### Portfolio Differentiators

- Mid-range desktop printer with the smallest footprint in its class

## Desktop Printers

	ZD220	ZD410	ZD420	ZD500R	ZD510-HC	ZD620
	Value	Midrange	Midrange	Premium	Premium	Premium
<b>Manufacturing</b>	•	•	•	•		•
<b>T&amp;L</b>	•	•	•	•		•
<b>Retail</b>	•	•	•	•		
<b>Healthcare</b>	•	•	•	•	•	•
<b>Hospitality</b>		•			•	
<b>Print DNA</b>	•	•	•	•	•	•





## ZD420

Ultra-fast, easy-to-use 4-inch printer

Desktop printer with many features including PrintSecure.

### Features

- 4-inch print width, 6-ips max print speed, large ribbon capacity
- 203 and 300 dpi available
- Multiple connectivity options
- Print DNA for greater visibility, manageability and security
- 5-status icons and 3-button UI
- Healthcare model available

### Portfolio Differentiators

- Mid-range desktop printer with advanced features
- Easy ribbon loading cartridge model available
- Field upgradeable media handling
- Movable sensor



## ZD500R

Bring UHF RFID printing to your desktop

Compact and easy-to-use RFID desktop printer with PrintSecure.

### Features

- 4-inch print width, 6 ips max print speed
- 203 and 300 dpi available
- Multiple connectivity options
- Print DNA for greater visibility, manageability and security

### Portfolio Differentiators

- UHF RFID printer/encoder



## ZD510-HC

Wristbands printed by a specialist

Dedicated wristband printer for healthcare or hospitality with PrintSecure.

### Features

- Ultra-compact, quiet operation
- Disinfectant-ready, UV-resistant
- Easy media loading cartridge for fast-paced environments
- Print DNA for greater visibility, manageability and security

### Portfolio Differentiators

- Wristband cartridge features anti-microbial coating that protects wristband from degradation, and 4x more durable than the leading competitor



## ZD620

The most advanced desktop printers

Premium desktop printer, easy-to-use, loaded with features.

### Features

- 4-inch print width, 8 ips max print speed
- 203 and 300 dpi available
- Compact design, intuitive interface, large capacity ribbon
- 5 LED status icons, moveable sensor
- Print DNA for greater visibility, manageability and security
- Healthcare model available

### Portfolio Differentiators

- Multiple options (peeler, linerless, cutter, color LCD)
- Media and connectivity field upgradeable
- Movable sensor





## Mobile Printers

On the go. On time. On demand.

Zebra mobile printers increase employee productivity and accuracy by enabling portable printing of barcode labels, receipts and RFID tags at the point of application. We offer a handheld mobile printer at every price point for every industry, and accessories for a complete portable solution.

	Mobile Printers			
	ZQ200	ZQ300	ZQ500	ZQ600
	Value	Midrange	Premium Rugged	Premium
<b>Manufacturing</b>	•	•	•	•
<b>T&amp;L</b>	•	•	•	
<b>Retail</b>	•	•	•	•
<b>Healthcare</b>				•
<b>Warehouse</b>			•	•
<b>Government</b>	•	•	•	
<b>Hospitality</b>	•	•		
<b>Print DNA</b>		•	•	•



## ZQ200\* Series

High quality, value-priced mobile printer

Competitively priced Zebra-quality printer.

### Features

- Low-duty cycle receipt and label printing on-the-go
- Linerless label support

### Portfolio Differentiators

- Wide variety of connectivity
- Multiple print widths per product using spacers

\*ZQ200 Series availability may vary by region.



## ZQ300 Series

The little printers that deliver big value

Printer series designed specifically to address vertical market applications.

### Features

- Mid-range printer for moderate receipt, label and linerless printing
- Multiple charging options available for use in-vehicle or in a settlement room, including convenient USB charging
- Better battery management with high capacity PowerPrecision+ battery, sleep mode and power smart print technology

### Portfolio Differentiators

- Different designs based on vertical application
- Common accessories for use with both the ZQ300 and mobile computers for lower TCO



## ZQ500 Series

For the rough and tumble world

The industry's most rugged mobile printer.

### Features

- High-duty cycle receipt and medium-duty cycle label printing on-the-go
- Fast print speed with up to 5 ips
- Full range of accessories including an exoskeleton for extra ruggedness
- Cloud Connect and simultaneous WLAN/Bluetooth®

### Portfolio Differentiators

- IP54 Rating out of the box without a protective case, IP65 when using the exoskeleton case
- Tumble tested per the IEC68-2-32 spec to handle 1300 tumbles from 3.3'
- 6.6' drops to concrete, 10' drop to concrete when using the exoskeleton
- MIL-STD 810g: shock, vibration and temperature exposure
- On-demand UHF RFID printing and encoding



## ZQ600 Series

Zebra's most versatile mobile printer series

Latest wireless connections for fast, reliable and secure printing.

### Features

- Optimized for heavy label printing with receipt printing capabilities
- Large color display for easy configuration and operation
- Comprehensive remote management tools
- Superior battery power and power management with PowerPrecision and Power Smart Print Technology

### Portfolio Differentiators

- Widest variety of accessories including forklift mount and ethernet cradle
- Healthcare model available
- On-demand UHF RFID printing and encoding (ZQ630 only)



# Card Printers

## Capabilities with credentials

Zebra card and badge printers make it easy to connect, create and print high quality, durable cards for a variety of applications. Whether you're printing ID cards, hospitality badges or financial cards, Zebra printers offer the security, supplies and software you need for a full solution.



### ZC100 Series

Simple, secure, single-sided printing

Compact size facilitates front-office deployments.

#### Features

- Easy to use
- Quick access to service and support tools
- Tips through NFC and QR code tags

#### Portfolio Differentiators

- Single-sided printing
- Optional magnetic stripe encoding



### ZC300 Series

You've tried hard, now try easy

Easy set-up with painless plug-and-play deployment.

#### Features

- Single or dual-sided printing
- Multiple encoding and connectivity options
- Support for multiple languages

#### Portfolio Differentiators

- Highly graphical color LED/LCD interface with well-tested icons, animations and messages
- Intuitive card feeder automatically adjusts for varying card thickness
- Printer cover lock prevents theft of card stock



### ZC10L

Exceptional large-format cards and badges

Edge-to-edge personalization, rugged design.

#### Features

- Single-sided dye sublimation printer
- Color and monochrome ribbons (RFID tagged)
- Specialized PVC cards

#### Portfolio Differentiators

- Prints large, oversized cards and badges
- Edge-to-edge printing
- All metal construction to handle shock, bangs and bumps



## ZXP Series 7

Highest operational efficiency with great output

Fast and effortless card printing.

### Features

- Processes up to three jobs simultaneously
- Quick access to service and support tools
- Tips through NFC & QR code tags
- Waste-free single or dual-sided lamination
- Single or dual-sided printing

### Portfolio Differentiators

- Robust design for a variety of applications
- High-capacity ribbon rolls require less operator time changing supplies
- UHF RFID encoding and 802.11 b/g wireless connectivity

## ZXP Series 9

Fast throughput with fantastic output

Ensure security with built-in fraud protection.

### Features

- Stunning photo-like cards
- Data encryption, host authentication and custom holographic laminates
- Edge-to-edge card printing
- 600 dpi option now available

### Portfolio Differentiators

- Zebra's only retransfer card printer
- Dual-sided simultaneous retransfer process provides encoding and laminating throughput
- Transfer film easily shows tamper evidence, providing built-in fraud protection

	Card Printers				
	ZC100	ZC300	ZC10L	ZXP Series 7	ZXP Series 9
	Value	Midrange	Premium	Premium	Premium
<b>Retail</b>	•	•		•	•
<b>Healthcare</b>	•			•	
<b>Government</b>		•		•	•
<b>Hospitality</b>	•	•	•	•	•
<b>Education</b>		•		•	•
<b>Finance</b>	•	•			
<b>Enterprise</b>		•		•	•
<b>Print DNA</b>	•	•			

# Print DNA

Transforms printers from the inside.

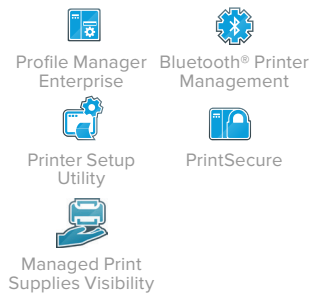


**Gain business-catalytic capabilities.** No other vendor offers you so much to drive performance and empower the front line in so many ways. It starts with embedded intelligence—a unique set of software, applications and utilities—that gives Zebra printers expansive capabilities for exponential results.

## Management Tools

Effortlessly add and control large volumes of Print DNA printers from anywhere

- Implement large-scale deployments
- Identify Print DNA printers on networks
- Configure printers to block unwanted access and ensure data and infrastructure are protected
- Quickly troubleshoot remotely
- Gain visibility of supplies usage and printer events



## Link-OS

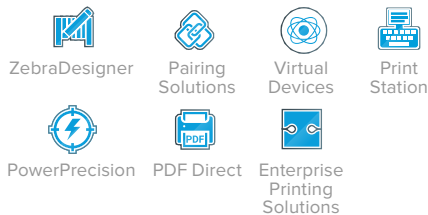
Print DNA printers are powered by Link-OS, the most intelligent printer operating system



## Productivity Tools

Elevate printer performance, so man and machine work at their peak

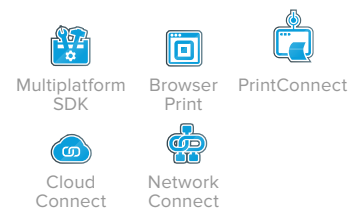
- Slash training time and workloads with a common UX
- Instantly launch an app or web page
- Increase accuracy and speed of output
- Print more languages than ordinary printers



## Development Tools

Integrate what's now with what's next in technology, just like that

- Securely connect directly to the cloud
- Quickly install new printers into complex networks and ERP environments
- Create native apps across multiple platforms



## Global Services

### Maximize uptime and ROI

Whether it's maximizing predictability and uptime or simply unlocking the data of your edge devices, Zebra's portfolio of services provides expertise every step of the way.

### Zebra OneCare™ Support Services

Constant peak performance and device uptime. That's the upside of protecting your Zebra printer investment with Zebra OneCare support services. Choose from several offers to meet your specific business needs to help eliminate unexpected disruptions and unbudgeted repair expenses. Get device protection with expert repair coverage, live-agent telephone technical support available in 17 languages, plus 24/7 online self-support, and software support and updates.

### Signature Services

Data insights from the technologies at the edge of your network can open up a world of new commercial opportunities. But without the right skills or resources, you could miss out on the full benefits. **Zebra Signature Services has nine capabilities that will help accelerate your ability to unlock intelligence from your data**, so you can run your business more productively.



\* Service availability, Service feature and/or repair turnaround time may differ by country. Please contact your Zebra sales representative for details.



---

To see the printers that improve front-line performance, visit [www.zebra.com/printers](http://www.zebra.com/printers)

---



**NA and Corporate Headquarters**  
+1 800 423 0442  
[inquiry4@zebra.com](mailto:inquiry4@zebra.com)

**Asia-Pacific Headquarters**  
+65 6858 0722  
[contact.apac@zebra.com](mailto:contact.apac@zebra.com)

**EMEA Headquarters**  
[zebra.com/locations](http://zebra.com/locations)  
[contact.emea@zebra.com](mailto:contact.emea@zebra.com)

**Latin America Headquarters**  
+1 786 245 3934  
[la.contactme@zebra.com](mailto:la.contactme@zebra.com)

ZEBRA and the stylized Zebra head are trademarks of Zebra Technologies Corporation, registered in many jurisdictions worldwide. All other trademarks are the property of their respective owners. ©2020 Zebra Technologies Corporation and/or its affiliates. All rights reserved. 6/2020